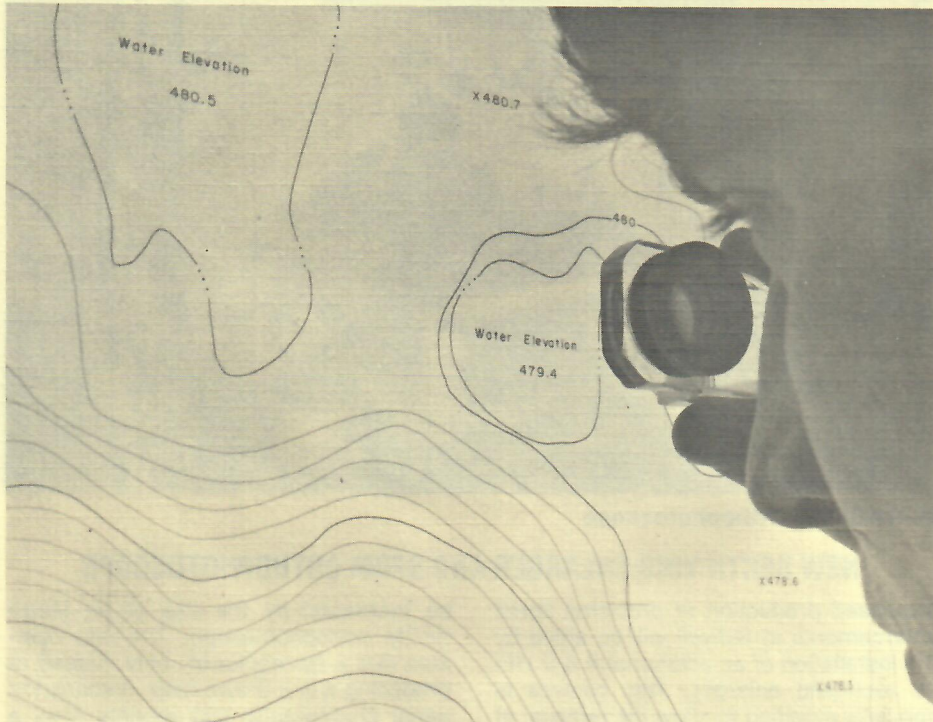




THE SIDWELL COMPANY

map news



Sidwell technician inspects mapping for plant site.

SIDWELL MAPPING USED FOR EXPERIMENTAL COAL GASIFICATION PLANT

The Illinois Coal Gasification Group of Chicago is using photogrammetric mapping supplied by Sidwell to construct a \$24 million demonstration plant in southern Illinois.

The experimental plant is being constructed jointly by the Coal Gasification Group, a consortium of five Illinois gas and electric utilities, and the federal Energy Research and Development Administration to test the commercial feasibility of producing pipeline-quality gas from coal.

The process is known as coal gasification and involves the chemical decomposition of coal using heat. The plant will use 2,200 tons of coal per day to produce 18 million cubic feet of pipeline-quality gas and 2,400 barrels of crude oil per day.

Precision aerial photography, field surveys and large-scale topographic map-

ping have been completed for the site in Perry County, Illinois. The aerial photography was obtained using a precision six-inch focal length camera. In addition to the 1" = 50' mapping showing two-foot contours, Sidwell set permanent monumentation on the site and provided coordinates for fifteen soil boring locations.

Although the basic gasification process is not new, the coal gasification carried on at the demonstration plant will produce commercial quantities of gas clean enough to meet modern environmental standards.

The Illinois test site was chosen because of the state's abundance of high sulfur coal and dependence on natural gas for energy.

The Sidwell maps will also be used to monitor reclamation of the area after plant construction and to plan landscaping.

NEW MAPPING PROJECTS

The following projects have recently been awarded to The Sidwell Company:

- Franklin County, Iowa (tax mapping)
- Ford County, Illinois (tax mapping)
- Sterling Twp. (Whiteside County), Illinois (tax mapping)
- St. Clair County, Illinois (soils productivity) (computation for assessments)
- Illinois Dept. of Conservation (topo mapping)
- Harza Engineering Company (topo mapping)
- Town of Menasha, Wisconsin (Topo-Plan mapping)
- Omaha Corps of Engineers (topo mapping)
- Dane County, Wisconsin, Park Commission (orthophotos)

DICK HOFFMAN NEW OHIO REPRESENTATIVE



Mr. Dick Hoffman has joined The Sidwell Company as a mapping services representative for the state of Ohio.

Dick, who was formerly General Manager of United Appraisal Company, will act as a consultant on aerial photography, computer assisted appraisals, tax mapping and parcel numbering systems.

His background in the mass appraisal field assures a thorough understanding of assessment administration and the complexities of county government.

You may reach Dick by calling 419/423-3582, or writing The Sidwell Company, Box 1002, Findlay, Ohio 45840.

LANDSCAPE ARCHITECTS' TOUR

Sidwell was recently host to the Illinois Chapter of the American Society of Landscape Architects.

The members were shown a slide program on aerial photography and topographic mapping. A question and answer period covered specific mapping applications of interest to the group. This was later followed by a tour of the mapping facilities, allowing everyone to become familiar with the techniques and equipment necessary for producing precision mapping.



JERRY JOHNSON INSTRUCTS AT ASSESSORS WORKSHOP

Jerry Johnson, Sidwell Senior Marketing Representative, was the Tuesday morning instructor at the annual Illinois Assessing Officers Workshop held in Springfield.

The class of over 350 assessors and deputies was shown a slide program on producing new aerial based tax maps and a permanent parcel numbering system.

Jerry followed with overhead slides showing the detailed development of a permanent parcel numbering system and how it is used in the assessment process. The session was completed with a discussion on aerial photography specifications.

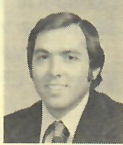
Mr. Johnson, who holds a C.I.A.O.A. designation, has been an instructor at the annual workshop for many years.

CONVENTIONS SCHEDULED

Sidwell's tax mapping and parcel numbering services were presented to officials at the Michigan County Officials Conference, Indiana Assessors Conference and the Illinois Assessors Workshop.

Sidwell's mapping services will also be represented at the upcoming Illinois County Officials Conference and the North Central Regional IAAO Conference in Bismarck, North Dakota.

DAVE WILL ADDRESSES ENGINEERS



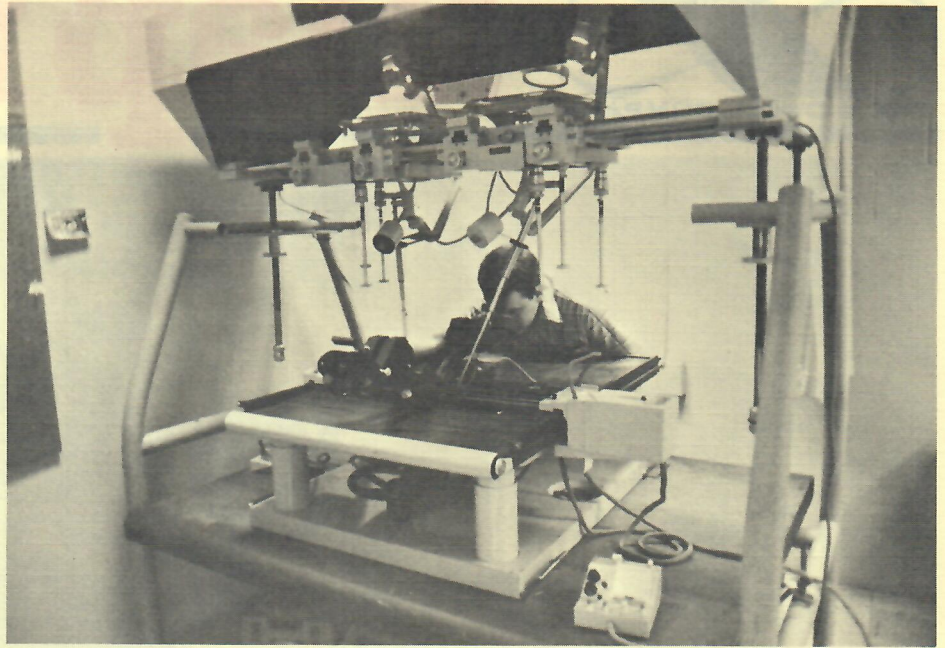
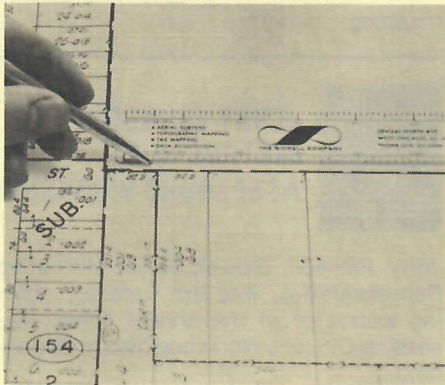
Sidwell Photogrammetric Services Representative, Dave Will, addressed the monthly meeting of the Blackhawk Chapter of the Illinois Society of Professional Engineers.

Dave used a color filmstrip program to illustrate the early development of aerial mapping. The program also showed the equipment and steps required to produce precision topographic mapping for engineering projects.

MAP RULER AVAILABLE

A plastic ruler, printed with four map scales at 100', 200', 400' and 600' to the inch, is available at no charge from Sidwell. The six-inch ruler is useful in the office or field for making quick measurements on maps or aerial photos and for making drawings to scale.

Rulers may be obtained by writing to: Dept. MN, c/o The Sidwell Company.



Matra SFOM Orthophotoscope

NEW RECTIFYING ENLARGER AND SFOM ORTHOPHOTOSCOPE

Increased production of precision aerial enlargements at Sidwell will be aided by the installation of an additional K & E HE-12 rectifying enlarger. This camera is specially modified to allow the removal of photographic distortions during the enlarging process.

Orthophotography production will also

be increased by the use of an Matra SFOM orthophotoscope. The unit operates like a stereoplotter, only instead of producing a line drawn map, it scans the aerial photography and reprints it as a corrected photo image having engineering map accuracy.

COOK COUNTY ATLAS AVAILABLE

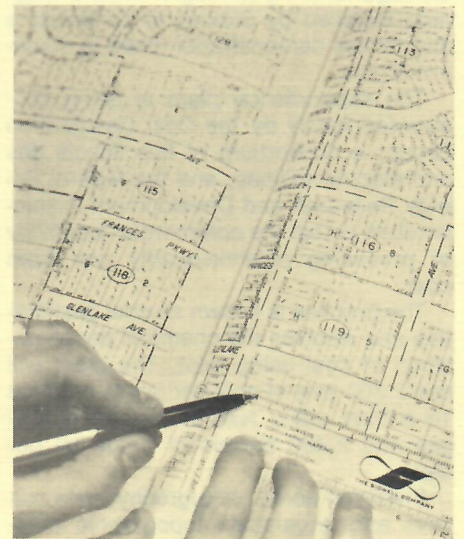
The new 1978 edition of the Cook County tax map atlas is now available for those requiring up-to-date property information.

The atlas contains 1" = 200' scale reduced copies of the official Cook County tax maps and shows every parcel of property in the county.

In addition, each 11" x 17" map page contains parcel boundary lines, dimensions, subdivision boundaries and the permanent real estate index number used on all tax bills.

The maps are available in a complete set of ten volumes covering the entire county. They are also available for a single township or bound into a volume covering approximately three townships.

For more information, contact Mr. Harris, c/o The Sidwell Company.



FOR FURTHER INFORMATION ON ANY SIDWELL MAPPING SERVICES . . .

write The Sidwell Co., 28W240 North Avenue, West Chicago, IL 60185 . . . or phone (312) 231-0206.